

CDC7 (CDC7L1) Antibody (N-term)
Purified Rabbit Polyclonal Antibody (Pab)
Catalog # AP7515a**Specification**

CDC7 (CDC7L1) Antibody (N-term) - Product Information

Application	WB,E
Primary Accession	O00311
Reactivity	Human
Host	Rabbit
Clonality	Polyclonal
Isotype	Rabbit IgG
Calculated MW	63888
Antigen Region	1-30

CDC7 (CDC7L1) Antibody (N-term) - Additional Information**Gene ID** 8317**Other Names**

Cell division cycle 7-related protein kinase, CDC7-related kinase, HsCdc7, huCdc7, CDC7, CDC7L1

Target/Specificity

This CDC7 (CDC7L1) antibody is generated from rabbits immunized with a KLH conjugated synthetic peptide between 1-30 amino acids from the N-terminal region of human CDC7 (CDC7L1).

Dilution

WB~~1:1000

E~~Use at an assay dependent concentration.

Format

Purified polyclonal antibody supplied in PBS with 0.09% (W/V) sodium azide. This antibody is purified through a protein A column, followed by peptide affinity purification.

Storage

Maintain refrigerated at 2-8°C for up to 2 weeks. For long term storage store at -20°C in small aliquots to prevent freeze-thaw cycles.

Precautions

CDC7 (CDC7L1) Antibody (N-term) is for research use only and not for use in diagnostic or therapeutic procedures.

CDC7 (CDC7L1) Antibody (N-term) - Protein Information**Name** CDC7 ([HGNC:1745](#))**Synonyms** CDC7L1

Function Kinase involved in initiation of DNA replication. Phosphorylates critical substrates that regulate the G1/S phase transition and initiation of DNA replication, such as MCM proteins and CLASPIN.

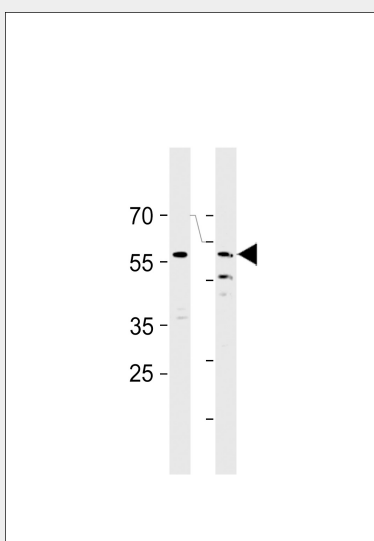
Cellular Location
Nucleus.

CDC7 (CDC7L1) Antibody (N-term) - Protocols

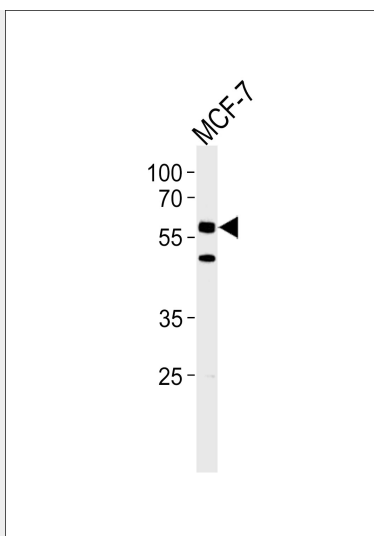
Provided below are standard protocols that you may find useful for product applications.

- [Western Blot](#)
- [Blocking Peptides](#)
- [Dot Blot](#)
- [Immunohistochemistry](#)
- [Immunofluorescence](#)
- [Immunoprecipitation](#)
- [Flow Cytometry](#)
- [Cell Culture](#)

CDC7 (CDC7L1) Antibody (N-term) - Images



HCDC7L1 Antibody (M9) (Cat. #AP7515a) western blot analysis in HT29, MCF-7 cell line lysates (35ug/lane). This demonstrates the HCDC7L1 antibody detected the HCDC7L1 protein (arrow).



HCDC7L1 Antibody (M9) (Cat. #AP7515a) western blot analysis in MCF-7 cell line lysates (35ug/lane). This demonstrates the HCDC7L1 antibody detected the HCDC7L1 protein (arrow).

CDC7 (CDC7L1) Antibody (N-term) - Background

CDC7L1 is predominantly localized in the nucleus and is a cell division cycle protein with kinase activity. Although expression levels of the protein appear to be constant throughout the cell cycle, the protein kinase activity appears to increase during S phase. It has been suggested that the protein is essential for initiation of DNA replication and that it plays a role in regulating cell cycle progression. Overexpression of this gene product may be associated with neoplastic transformation for some tumors.

CDC7 (CDC7L1) Antibody (N-term) - References

- Montagnoli, A., et al., EMBO J. 21(12):3171-3181 (2002).
Hess, G.F., et al., Gene 211(1):133-140 (1998).
Jiang, W., et al., Proc. Natl. Acad. Sci. U.S.A. 94(26):14320-14325 (1997).
Sato, N., et al., EMBO J. 16(14):4340-4351 (1997).